

CON-LAB Conducted Immunity Lab Software

Product Overview

Ease of Use TDK Conducted Immunity Lab makes it simple to test your products for immunity to conducted disturbances on their power, signal, and control lines, and to determine your products' immunity to the complex waveforms of induced bulk cable current. The familiar graphical interface makes it easy to use without sacrificing flexibility or performance.

Performance Enhance test lab performance by maximizing repeatability of automated measurements using consistent, proven algorithms. TDK Conducted Immunity Lab can be configured to run conducted immunity tests according to test standards applicable to your products.

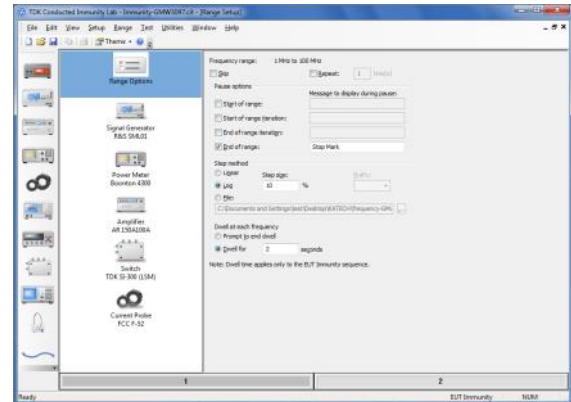
Flexibility Enables you to create simple test files for others to run, or you can interact with the test process every step of the way.

Test Standards

- Automotive (BMW, Chrysler, ECE, European Auto Directive, Ford, GMW, Hyundai, ISO 11451, ISO 11452, JASO, Nissan, Porsche, PSA, Renault, SAE)
- Aviation/Military (MILSTD-461, RTCA DO-160)
- Commercial (IEC 61000-4-6, ETSI)
- Telecommunications (GSM, CDMA, WCDMA, UMTS, DECT, Cordless Phones, Bluetooth, WiFi)

Minimum System Requirements

- Windows 7, 8 or 10 (Professional versions)



TDK Conducted Immunity Lab Software combines a powerful set of testing tools with an easy-to-use interface to reduce the complexity associated with immunity testing.

Freq. (MHz)	Fabric Cond. (dBµV)	Imm. Cond. (dBµV)	Field Pwr. (dBm)	Net Pwr. (dBm)	Fabric Pwr. (dBm)	Gen. Drive (dBm)	Imm. Drive (dBm)	Target Gen. (dBm)	VSWR
1.0	82.20	82.20	11.71	11.71	-10.43	-10.43	-10.43	-10.43	2.07
1.25	82.23	82.23	11.72	11.72	-10.22	-10.22	-10.22	-10.22	2.07
1.5	82.26	82.26	11.73	11.73	-10.02	-10.02	-10.02	-10.02	2.06
1.8	82.29	82.29	11.74	11.74	-9.82	-9.82	-9.82	-9.82	2.05
2.0	82.31	82.31	11.75	11.75	-9.64	-9.64	-9.64	-9.64	2.04
2.25	82.34	82.34	11.76	11.76	-9.46	-9.46	-9.46	-9.46	2.03
2.5	82.37	82.37	11.77	11.77	-9.28	-9.28	-9.28	-9.28	2.02
2.75	82.40	82.40	11.78	11.78	-9.11	-9.11	-9.11	-9.11	2.01
3.0	82.43	82.43	11.79	11.79	-8.94	-8.94	-8.94	-8.94	2.00
3.25	82.46	82.46	11.80	11.80	-8.78	-8.78	-8.78	-8.78	1.99
3.5	82.49	82.49	11.81	11.81	-8.62	-8.62	-8.62	-8.62	1.98
3.75	82.52	82.52	11.82	11.82	-8.47	-8.47	-8.47	-8.47	1.97
4.0	82.55	82.55	11.83	11.83	-8.32	-8.32	-8.32	-8.32	1.96
4.25	82.58	82.58	11.84	11.84	-8.18	-8.18	-8.18	-8.18	1.95
4.5	82.61	82.61	11.85	11.85	-8.04	-8.04	-8.04	-8.04	1.94
4.75	82.64	82.64	11.86	11.86	-7.91	-7.91	-7.91	-7.91	1.93
5.0	82.67	82.67	11.87	11.87	-7.78	-7.78	-7.78	-7.78	1.92
5.25	82.70	82.70	11.88	11.88	-7.65	-7.65	-7.65	-7.65	1.91
5.5	82.73	82.73	11.89	11.89	-7.53	-7.53	-7.53	-7.53	1.90
5.75	82.76	82.76	11.90	11.90	-7.41	-7.41	-7.41	-7.41	1.89
6.0	82.79	82.79	11.91	11.91	-7.30	-7.30	-7.30	-7.30	1.88
6.25	82.82	82.82	11.92	11.92	-7.19	-7.19	-7.19	-7.19	1.87
6.5	82.85	82.85	11.93	11.93	-7.09	-7.09	-7.09	-7.09	1.86
6.75	82.88	82.88	11.94	11.94	-7.00	-7.00	-7.00	-7.00	1.85
7.0	82.91	82.91	11.95	11.95	-6.91	-6.91	-6.91	-6.91	1.84
7.25	82.94	82.94	11.96	11.96	-6.83	-6.83	-6.83	-6.83	1.83
7.5	82.97	82.97	11.97	11.97	-6.75	-6.75	-6.75	-6.75	1.82
7.75	83.00	83.00	11.98	11.98	-6.68	-6.68	-6.68	-6.68	1.81
8.0	83.03	83.03	11.99	11.99	-6.61	-6.61	-6.61	-6.61	1.80
8.25	83.06	83.06	12.00	12.00	-6.54	-6.54	-6.54	-6.54	1.79
8.5	83.09	83.09	12.01	12.01	-6.48	-6.48	-6.48	-6.48	1.78
8.75	83.12	83.12	12.02	12.02	-6.42	-6.42	-6.42	-6.42	1.77
9.0	83.15	83.15	12.03	12.03	-6.37	-6.37	-6.37	-6.37	1.76
9.25	83.18	83.18	12.04	12.04	-6.32	-6.32	-6.32	-6.32	1.75
9.5	83.21	83.21	12.05	12.05	-6.27	-6.27	-6.27	-6.27	1.74
9.75	83.24	83.24	12.06	12.06	-6.22	-6.22	-6.22	-6.22	1.73
10.0	83.27	83.27	12.07	12.07	-6.18	-6.18	-6.18	-6.18	1.72
10.25	83.30	83.30	12.08	12.08	-6.14	-6.14	-6.14	-6.14	1.71
10.5	83.33	83.33	12.09	12.09	-6.10	-6.10	-6.10	-6.10	1.70
10.75	83.36	83.36	12.10	12.10	-6.06	-6.06	-6.06	-6.06	1.69
11.0	83.39	83.39	12.11	12.11	-6.03	-6.03	-6.03	-6.03	1.68
11.25	83.42	83.42	12.12	12.12	-6.00	-6.00	-6.00	-6.00	1.67
11.5	83.45	83.45	12.13	12.13	-5.97	-5.97	-5.97	-5.97	1.66
11.75	83.48	83.48	12.14	12.14	-5.94	-5.94	-5.94	-5.94	1.65
12.0	83.51	83.51	12.15	12.15	-5.91	-5.91	-5.91	-5.91	1.64
12.25	83.54	83.54	12.16	12.16	-5.88	-5.88	-5.88	-5.88	1.63
12.5	83.57	83.57	12.17	12.17	-5.85	-5.85	-5.85	-5.85	1.62
12.75	83.60	83.60	12.18	12.18	-5.82	-5.82	-5.82	-5.82	1.61
13.0	83.63	83.63	12.19	12.19	-5.79	-5.79	-5.79	-5.79	1.60
13.25	83.66	83.66	12.20	12.20	-5.76	-5.76	-5.76	-5.76	1.59
13.5	83.69	83.69	12.21	12.21	-5.73	-5.73	-5.73	-5.73	1.58
13.75	83.72	83.72	12.22	12.22	-5.70	-5.70	-5.70	-5.70	1.57
14.0	83.75	83.75	12.23	12.23	-5.67	-5.67	-5.67	-5.67	1.56
14.25	83.78	83.78	12.24	12.24	-5.64	-5.64	-5.64	-5.64	1.55
14.5	83.81	83.81	12.25	12.25	-5.61	-5.61	-5.61	-5.61	1.54
14.75	83.84	83.84	12.26	12.26	-5.58	-5.58	-5.58	-5.58	1.53
15.0	83.87	83.87	12.27	12.27	-5.55	-5.55	-5.55	-5.55	1.52
15.25	83.90	83.90	12.28	12.28	-5.52	-5.52	-5.52	-5.52	1.51
15.5	83.93	83.93	12.29	12.29	-5.49	-5.49	-5.49	-5.49	1.50
15.75	83.96	83.96	12.30	12.30	-5.46	-5.46	-5.46	-5.46	1.49
16.0	83.99	83.99	12.31	12.31	-5.43	-5.43	-5.43	-5.43	1.48
16.25	84.02	84.02	12.32	12.32	-5.40	-5.40	-5.40	-5.40	1.47
16.5	84.05	84.05	12.33	12.33	-5.37	-5.37	-5.37	-5.37	1.46
16.75	84.08	84.08	12.34	12.34	-5.34	-5.34	-5.34	-5.34	1.45
17.0	84.11	84.11	12.35	12.35	-5.31	-5.31	-5.31	-5.31	1.44
17.25	84.14	84.14	12.36	12.36	-5.28	-5.28	-5.28	-5.28	1.43
17.5	84.17	84.17	12.37	12.37	-5.25	-5.25	-5.25	-5.25	1.42
17.75	84.20	84.20	12.38	12.38	-5.22	-5.22	-5.22	-5.22	1.41
18.0	84.23	84.23	12.39	12.39	-5.19	-5.19	-5.19	-5.19	1.40
18.25	84.26	84.26	12.40	12.40	-5.16	-5.16	-5.16	-5.16	1.39
18.5	84.29	84.29	12.41	12.41	-5.13	-5.13	-5.13	-5.13	1.38
18.75	84.32	84.32	12.42	12.42	-5.10	-5.10	-5.10	-5.10	1.37
19.0	84.35	84.35	12.43	12.43	-5.07	-5.07	-5.07	-5.07	1.36
19.25	84.38	84.38	12.44	12.44	-5.04	-5.04	-5.04	-5.04	1.35
19.5	84.41	84.41	12.45	12.45	-5.01	-5.01	-5.01	-5.01	1.34
19.75	84.44	84.44	12.46	12.46	-4.98	-4.98	-4.98	-4.98	1.33
20.0	84.47	84.47	12.47	12.47	-4.95	-4.95	-4.95	-4.95	1.32
20.25	84.50	84.50	12.48	12.48	-4.92	-4.92	-4.92	-4.92	1.31
20.5	84.53	84.53	12.49	12.49	-4.89	-4.89	-4.89	-4.89	1.30

Data Table Features

- Configurable data display format
- Flexible configuration allowing any data parameters to be displayed in the table
- Export data to a text file
- Data tables may be copied and pasted into documents in other applications (e.g. Word, etc.)
- Add/delete/move columns
- Color coding of data values to indicate markers
- Sort data on any data parameter
- "Find" feature to locate data

CON-LAB Conducted Immunity Lab Software

Testing Features

- Realtime data display during tests
- Configurable test level and dwell time
- Supports a wide variety of signal generators, amplifiers, power meters, receivers, spectrum analyzers, base station simulators, switch modules, and other types of equipment
- Email notification of test completion with the test file optionally attached
- Configurable delays
- Analysis of measurement uncertainty per UKAS LAB34
- Tests may be paused, resumed, or stopped
- Easy-to-edit factor and test level files
- Interactive control of the test to investigate the immunity threshold of the EUT
- Interacts with TDK EUT Monitoring software to monitor EUT parameters

