

## EMI-GTEM-LAB

# GTEM-Based Emissions Lab Software

### Product Overview

**Performance** The TDK RF Solutions GTEM-Based Emissions Lab Software makes it simple to perform radiated emissions tests in a GTEM. Designed by experienced EMC engineers, TDK GTEM Emissions Lab Software is easy to use without sacrificing performance.

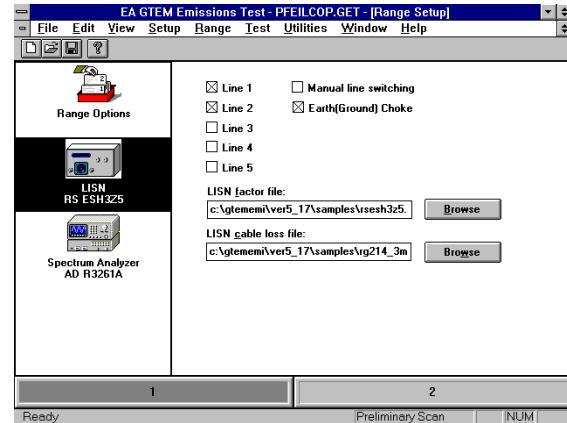
**Automated or Manual Control** You can create an uncomplicated system for others that practically runs itself, or you can interact with the test process every step of the way. For example, for radiated EMI tests in a GTEM, you can choose up to 12 EUT positions at which the software will make measurements. A GTEM to OATS correlation utility computes the E-field. User-defined limits, cable loss, and preamplifier factors are all taken into account by the software.

### Applications

- Designed for testing to CISPR, VDE, and FCC regulations

### Features

- Radiated and conducted emission measurement capabilities are incorporated into a single software package
- Automatic positioning of the EUT in the GTEM
- Compatible with many popular test instruments
- Stores test data for future retrieval & analysis
- Controls test process via IEEE 488 bus



**TDK RF Solutions GTEM-Based Emissions Lab Software features a powerful yet easy to use set of tools to perform EMC testing in a GTEM.**

### Minimum System Requirements

- Microsoft Windows 2000 or XP Pro
- 256 MB of RAM
- National Instruments GPIB interface card

# EMI-GTEM-LAB

## GTEM-Based Emissions Lab Software

### Measurement Features

#### Two-Stage Measurement:

- Preliminary Scan
- Final Measurement

### Graph Features

- Option to display multiple graphs
- User-defined parameters for X & Y-axis
- Dual Y-axis display option
- Display Left, Right, of both Y-axis options
- Data display box for up to 16 data parameters

### Software Setup Features

#### Parameter Setup Features:

- Add/remove list of available parameters
- Independent selection for each test sequence
- Frequency range selection for each test

#### Range Setup Features:

- Range based system instrumentation setup
- Option to split frequency range into sub ranges
- Independent selection of test instruments for each range
- Add/delete hardware for required test range(s)
- Pause or skip option for any selected range
- User-defined message is displayed at the start of each range

### Data Table Features

- User selectable column width and data precision
- Automatic data color coding
- Automatic data sorting
- "Find" option to locate data

### Ordering Information

Product: TDK GTEM-Based Emissions Lab Software  
 Model Number: EMI-GTEM-LAB

**To place an order or to learn more about the TDK RF Solutions products that best meet your needs, contact your TDK sales representative:**

#### TDK RF Solutions Inc.

1101 Cypress Creek Rd.  
 Cedar Park, Texas 78613 USA  
 Phone: 1-512-258-9478  
 Fax: 1-512-258-0740  
 Email: info@tdkrf.com  
 World Wide Web: www.tdkrfsolutions.com

TOTAL RF EXPERTISE™



[www.tdkrfsolutions.com](http://www.tdkrfsolutions.com)

To learn more about TDK RF Solutions' wide range of innovative products and services visit [www.tdkrfsolutions.com](http://www.tdkrfsolutions.com)

© Copyright 2006 TDK RF Solutions Inc. All rights reserved. Specifications subject to change without notice.

DSEMIEM022406